



# TeraStation™ 71210RH Series



## AN EVOLUTION IN ENTERPRISE NETWORK STORAGE

Buffalo's TS71210RH is a powerful 12-bay rackmount network-attached storage (NAS) product that marks an evolution in enterprise-level data storage solutions. TS71210RH features an Intel® Xeon® quad-core processor, enterprise-grade CMR hard drives (up to 240TB total capacity), and 4 native 10GbE ports to enable a versatile and powerful data storage solution with high throughput to handle data-intensive IT environments.

Buffalo knows you need a flexible but secure storage solution to safeguard your data, which is why the TS71210RH comes with RAM expansion, along with two PCIe slots so you can enable SSD caching and attach high-speed SFP+ or QSFP network adapters to scale NAS performance as your business grows.

Optimized for data protection, the TS71210RH comes with robust security features that runs on a closed system and comes with the cutting-edge Btrfs file system for stability and snapshots for near-instantaneous data backup and recovery, as well as ransomware mitigation.

With iSCSI backup and expansion, virtualization, and cloud support, the TS71210RH can be seamlessly integrated into any IT environment as a dynamic storage solution, including production data storage, mission-critical file server, surveillance, and more.

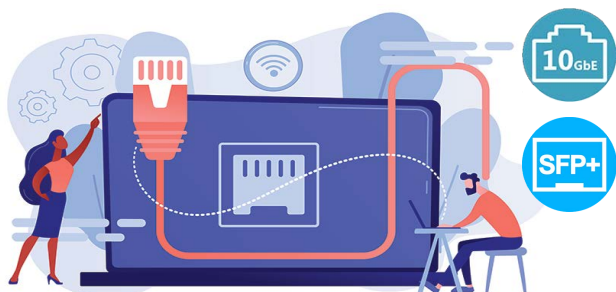
## Product Highlights

- **Hard Drives Included**  
Available partially- or fully-populated with pre-tested, enterprise-grade CMR hard drives
- **Powerful Performance**  
Enterprise-level server performance with SSD caching to enable a powerful platform for both active storage and reliable backup
- **High Throughput**  
Four native 10GbE ports with SFP+/QSFP network card support for optimized bandwidth
- **High Scalability**  
Expandable capacity and RAM, along with SSD caching to meet your current and future needs
- **Robust Data Protection**  
Acclaimed features such as a closed system, snapshots and Btrfs file system, MFA, drive encryption, and more
- **Warranty/Support**  
5-year product warranty and US-based 24/7 support



## High-Performance Active Storage

TS71210RH delivers enterprise-level server performance and a dynamic and stable platform for data-intensive IT environments. Designed to handle high workloads, the TS71210RH solution can act as production data storage, large-scale data storage and backup, mission-critical file server, and more.

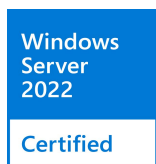
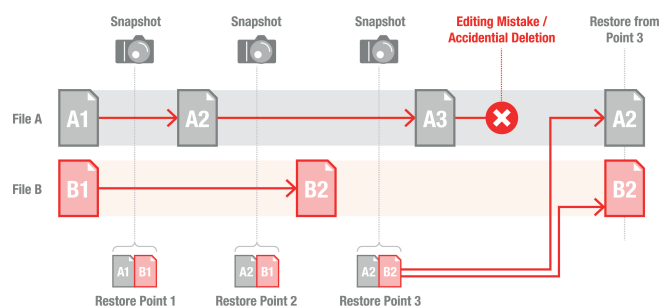


## High Throughput to Accelerate Productivity

With 4 native 10GbE ports, TS71210RH provides high bandwidth for blazing fast transfer speeds to accelerate any modern IT environment. Optimize data operations with efficient file sharing for collaboration, virtualization solutions, and fast data backup/recovery without missing a beat.

## Snapshots for Effortless Data Backup/Recovery

The TS71210RH includes the cutting-edge Btrfs file system and snapshots so you can have effortless short-term data backup and recovery at near-instantaneous speed. Snapshots allow you to recover single files or an entire storage volume at granulated timelines, allowing you to quickly and reliably mitigate ransomware and safeguard against file errors.



## Leverage Virtualization to Improve Operations

Enable fast deployment and integration into Microsoft and VMware virtual environments, and improve working efficiency with increased virtual application performance and greater flexibility in storage capacity planning and allocation. You can also back up virtual machines to the TS71210RH to protect your data from hardware failure.

## PCIe Expansion for Enhanced Performance

The TS71210RH offers PCIe expansion so it can evolve with your storage needs. SSD caching can improve access speed and stability to boost virtualization applications, iSCSI expansion, and other operations. You can also connect SFP+/QSFP network cards to further accelerate your network performance.



MODELS		TS71210 (Partially-Populated)	TS71210 (Fully-Populated)
<b>Part Numbers</b>		TS71210RH3204 TS71210RH4804 TS71210RH6404 TS71210RH8004	TS71210RH9612 TS71210RH14412 TS71210RH19212 TS71210RH24012
<b>Form Factor</b>		8TB x 4 12TB x 4 16TB x 4 20TB x 4 Rackmount	8TB x 12 12TB x 12 16TB x 12 20TB x 12 Rackmount
<b>INTERNAL HARD DRIVES</b>			
<b>Hard Drive Type</b>		Enterprise Grade	Enterprise Grade
<b>Number of Included Drives</b>		4	12
<b>Capacity Range</b>		32, 48, 64, 80TB	96, 144, 192, 240TB
<b>Supported RAID</b>		0 / 1 / 5 / 6 / 10 / JBOD (Individual Disks)	0 / 1 / 5 / 6 / 10 / JBOD (Individual Disks)
<b>PERFORMANCE</b>			
<b>CPU</b>		Intel® Xeon® D-1713NT 2.2GHz Quad-core (Turbo Boost up to 3.5GHz)	Intel® Xeon® D-1713NT 2.2GHz Quad-core (Turbo Boost up to 3.5GHz)
<b>Memory</b>		DDR4 16GB ECC	DDR4 16GB ECC
<b>Memory Expansion</b>		Expandable up to 64GB (16GB x 4)	Expandable up to 64GB (16GB x 4)
<b>File System</b>		Btrfs	Btrfs
<b>EXPANSION OPTIONS</b>			
<b>PCIe Expansion Ports</b>		2x PCIe Gen 4x8	2x PCIe Gen 4x8
<b>SSD Caching</b>		Yes	Yes
<b>10GbE (SFP+)</b>		Yes	Yes
<b>25GbE (SFP28)</b>		Yes	Yes
<b>40GbE (QSFP)</b>		Yes	Yes
<b>ENVIRONMENTAL &amp; POWER</b>			
<b>Power Consumption</b>		Max 500W Data Transfer 251W Idling 238W	Max 500W Data Transfer 251W Idling 238W
<b>Power Supply</b>		Internal AC 100-240V Universal 50/60Hz	Internal AC 100-240V Universal 50/60Hz
<b>Power Cable</b>		NEMA 5-15, NEMA C13/C14	NEMA 5-15, NEMA C13/C14
<b>Redundant Power Supply</b>		Yes (Included)	Yes (Included)
<b>SHIPPING</b>			
<b>Product Dimensions (L x W x H)</b>		29.0 x 18.9 x 3.5 in	29.0 x 18.9 x 3.5 in
<b>Product Weight</b>		41.7 lbs	54.2 lbs
<b>LAN/USB</b>			
<b>Number of LAN Ports</b>		4 (10GBASE-T)	
<b>Data Transfer Rates</b>		10Gbps / 1000Mbps / 100 Mbps / 10Mbps	
<b>Supported Protocols</b>		TCP/IP	
<b>Network File Services</b>		CIFS/SMB, AFP, FTP/FTPS/SFTP, NFS	
<b>Connector Type</b>		RJ-45	
<b>Number of USB Ports</b>		4 (2x USB 3.2 Gen 1, 2x USB 2.0)	
<b>USB Port Type</b>		Type-A	
<b>WARRANTY</b>		5 years with Next Business Day Services on all components, including hard drives (with product registration)	
<b>CLIENT OS SUPPORT</b>		Windows® 11, Windows® 10, Windows® 8.1 (32-bit/64-bit) Windows Server® 2019, Windows Server® 2016, Windows Server® 2012, Windows Server® 2012R macOS® 10.13 or later	
<b>ACCESSORIES</b>			
<b>Compatible Hard Drives</b>		OP-HDHU2 Series OP-NVSSD-512G, OP-NVSSD-2.0T (For SSD Caching)	
<b>Compatible Memory Modules</b>		OP-ECCMEM-16G	

## TeraStation™ 71210RH Series



MADE IN  
**JAPAN**

**TAA**  
Compliant

©2020 BUFFALO INC. All rights reserved. BUFFALO and BUFFALO logo are either trademarks or registered trademarks of MELCO HOLDINGS INC. TeraStation is a trademark of BUFFALO INC. Microsoft Windows and Windows logo are either registered trademarks or trademarks of Microsoft Corporation in the United States and/or other countries. Mac OS is a trademark of Apple Inc., registered in the U.S. and other countries. The names and logos of other companies mentioned herein belong to their respective owners.